



**SIMPLE.SOLID.SAFE.**

**Brochure 2015**





## About e-breathe

e-breath is known for the highest claim towards quality, continuous innovation and easy to use products.

The goal and philosophy behind our way, was to develop user-related personal protective equipment and operate as closely as possible to the market. Therefore, we are in close contact with our customers and adapt our concepts as well as our product range to the continuously changing requirements of the users.

For the beginning, we concentrate on the area of blower-respiratory protection, with the objective to constantly extend our product portfolio. Our long-time experience in trading and the proximity to the market enable the development not only of personal protective equipment for the mass market but also **customized special solutions**.

According to our guiding principle "SIMPLE.SOLID.SAFE", e-breath products provide maximum comfort, variability and efficiency for the user. It is our effort to develop module-based products in order to offer our customers the highest possible flexibility and provide enough combination possibilities for maximal usability.

[www.e-breathe.de](http://www.e-breathe.de)

## Table of Contents

4-5	<b>Respirators</b> e-breathe Smartblower
6-7	<b>Face-Shield</b> Multimask
8-9	<b>Overpressure Hood</b> PM Lab Hood AV
10-11	<b>Cleanroom Hood</b> e-breathe Cleanroom Hood
12-13	<b>Backpack System</b> Smartbelt
14-15	<b>Respiratory Filter</b> e-breathe Particle filter



# Smartblower Respirators

## Smartblower

The radial motor delivers an air volume of up to 180l/min.  
The blower motor impresses with its compact size and its weight of only 85g.

- IP 67 watertight  
(in closed conditions)

## DIN knuckle thread connector:

- 1 filter operation for cost reduction
- 2 filter operation for optimisation of air performance

## Integrated display

### Informs the user about:

- battery status and maximum usability time
- actual air volume
- Filter type
- Operating hours
- Battery charging cycles
- Next service date

## SVE (Battery Pack)

With integrated software for control of the usability time. Duration of use/maintenance, air volume and Filter status can be displayed. Optical and acoustic warning functions.

- weight 350g
- Works reliable the whole shift
- IP 67 watertight



# Smartblower Respirators

The small blower motor supplies up to 180ltr/min. of air.  
The unit is equally suitable for pressurised or negative pressure applications.

The blower is controlled by a 350g Battery/Control Unit.

All important functions may be accessed via one simple menu.

The system gives the user optical and audible warnings, and in closed conditions achieves Protection Class IP67 (protection while temporarily submerged).

The battery pack can be recharged to 80% of full charge in one hour.  
100% full charge can be reached in 3 hours.



## Product features

- Minimum battery run time 8 hours
- Optical and acoustic alarm functions
- IP 67 watertight
- Air volume from 80-180 litres/minute





# Multimask

## Face-shield

### Off-centre buckle

Attaches the visor with a turning movement and takes up the headband.

### Visor seal

The easy-to-replace visor is sealed by a sponge rubber seal, which ensures effective protection from external influences.

### Face seal

The comfortable neoprene seal forms perfectly to any facial type and is easy to replace. Also suitable for wearers of spectacles.

### Expelled air valve

The valve is located close to nose and mouth, which ensures optimum removal of expelled air and renders a speech membrane superfluous.

### Air hosepipe fastener

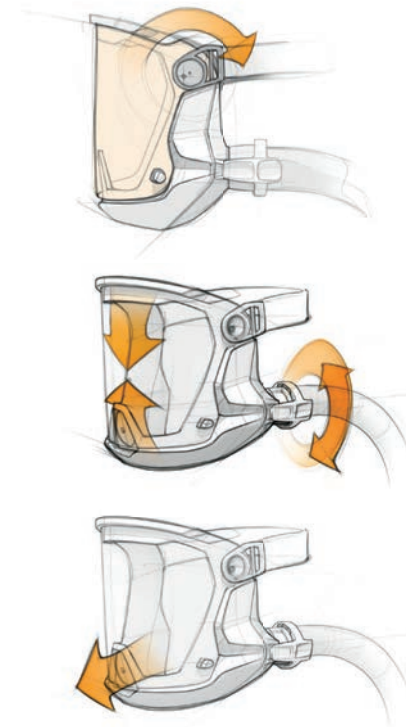
Due to the innovative fastener the incoming airflow can be positioned in any one of 3 positions.



# Multimask

## Face-shield

The Multimask ushers in a new generation of facial protection. The Multimask is lightweight, comfortable and maintenance-free. The off-centre lock enables quick and easy replacement of the visor. The visor gives a wide, unobstructed field of vision. The facial seal ensures maximum safety with maximum comfort. A further innovation is the airflow control, which leads the supplied air through the turnable airpipe connector into different air channels. This enables the wearer to adjust the air supply to suit his or her own individual needs.



### Product features

- Comfortable facial seal
- Solid PVC visor
- Individual airflow control
- Light – comfortable - maintenance-free
- Exhalation valve
- Combinable with standardized safety helmet

### Certificates:

- DIN EN 12941 TH3 & TH2
- Visor Protection EN 166 class B



# PM Lab Hood

## Overpressure Hood

### Headband

The external headband allows individual adaptation to any head size.

### Forehead band

Fixes the hood and forms the visor. The soft forehead band ensures a high degree of comfort.

### PVC-Visor

Supplied flat, without unwanted creases. Ergonomically formed for an unrestricted field of vision.

### Expelled air valve

Ensures a direct flowpath for expelled air.

### Hood material

Consists of a particleproof, lightweight, solid and fluff-free material.

### Construction

Equipped with a textile neck seal with elastic band and a shoulder cover, which is worn inside or outside of the suit

### Airflow

The airflow is passing inside of the hood along the PVC-visor so that it is not blown into the face of the user.



# PM Lab Hood

## Overpressure Hood

The complete hood consists of a particle-tight, light, solid, lint-free material with integrated eye protection and shoulder covering.

The especially for risks in general industries like the pharmaceutical industry and disaster medicine developed hood achieves, together with a blower, the highest protection class.

The blower builds up a constant overpressure in the hood so that it is working self-supporting and without any headgear. The headband can be adjusted universally for every head size.



### Product characteristics

- Allround field of vision
- Headband size S-XXL
- No limits on wearing time
- Suitable for beards and spectacle wearers

### Certificates:

- DIN EN 12941
- Protection class TH3



# e-breathe Cleanroom Hood

## Head area

On top of the hood a particulate fleece is located, through which surrounding air is sucked into the hood.

## Forehead band

Fixes the hood and forms the visor. The soft forehead band ensures a high degree of comfort.

## PVC-Visor

Supplied flat, without unwanted creases. Ergonomically formed for an unrestricted field of vision.

## Blower

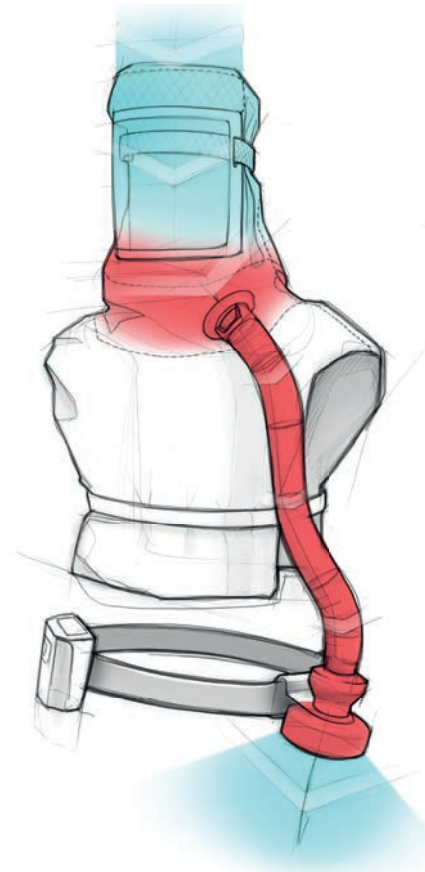
Is used inversely for creating a vacuum inside the hood to discharge the used air and let in new, fresh air through the P3-fleece.

## Exhaled air

The used air is exhausted and emitted to the surrounding via a P3-filter.

## Breathing hose

Is firmly and securely connected to the cleanroom hood by means of a special attachment clip.



# e-breathe Cleanroom Hood

The patented e-breathe cleanroom hood is intended to reduce the concentration of airborne particles emanating from the human inside the cleanroom.

In contrast to systems, which are designed as respiratory protection systems, the e-breathe cleanroom hood is based on a vacuum principle instead of an overpressure principle. This means that no fresh, filtered air is transported into the hood but air is continuously exhausted from the inside of the hood.

Due to the particulate fleece, which is integrated in the top of the hood, air from the cleanroom can get into the hood. This air is lead past the user's face and breathing organs and then exhausted via the hose. In this way the contaminated exhaled air and the airborne particles emanated from the human get along the intended way to the P3 particulate fleece, which is attached to the blower unit. The exhaled air and particles are then filtered and emitted to the cleanroom. The filter efficiency of this filter amounts to 99,9993% for particles smaller than 0,07 micron.

## Certification:

- Validation according to DIN EN ISO 1137- part 2:2013/09 & by procedure VDmax 25
- Application in cleanrooms of class B, C and D



# Smartbelt & Y-Connector

## Backpack System

### Shoulder belt

The lightweight bearers are made from stable, breathable net fabric.

### Bayonet locking

This innovative link ensures fast and safe detachment of the blower unit.

### Back cushion

For a small contact area and maximum air circulation.

### Y-Connector

The system combines 2 filters with the Smartblower motor, enabling the air supply and the air consumption to be spread through 2 filters.

### SVE (Battery Pack) Strap

One horizontal holder for the hip position and one vertical holder for the backpack position

### Safety presstuds

Enable easy adjustment of fit and reduce the likelihood of unintended opening.



# Smartbelt & Y-Connector

## Backpack System

1



2



3



The Smartbelt adapts excellently to the requirements of various application areas. It follows every movement of the user light and flexible and therefore supports him/ her optimally on the activities to be performed.

The modular construction of the parts and the safety buttons at the Smartbelt make it possible to change the belt position/combination and choose from five different wearing positions.

Back cushions out of breathable functional foam ensure ventilation and thus better drain air and humidity.

The bayonet locking at the Smartbelt ensures a safe and quick inclusion of the Y-connector.

### Product features

- Five wearing positions
- Quick inclusion of Smartblower
- High wearing comfort
- Optimal weight distribution
- Quick and easy assembly/ disassembly

## Y-Connector



The Y-Connector is always needed when the Smartblower is supposed to be used as protection against gases. To ensure enough safety during these applications it is necessary to constantly use two combination filters simultaneously, due to the enormous air volume of the Smartblower.

Of course it is also possible to use the Y-Connector with two particulate filters. Thus, the resistance, which the filters apply against the Smartblower, is reduced and the air volume can be optimized. At the same time, the capacity of the filters is doubled as well as the service life of the system.



# e-breathe Particle filter

## Respiratory filters

- Product characteristics
- Light weight
  - Eco-friendly
  - Robust construction
  - Extremely low breathing resistance
  - Long service life

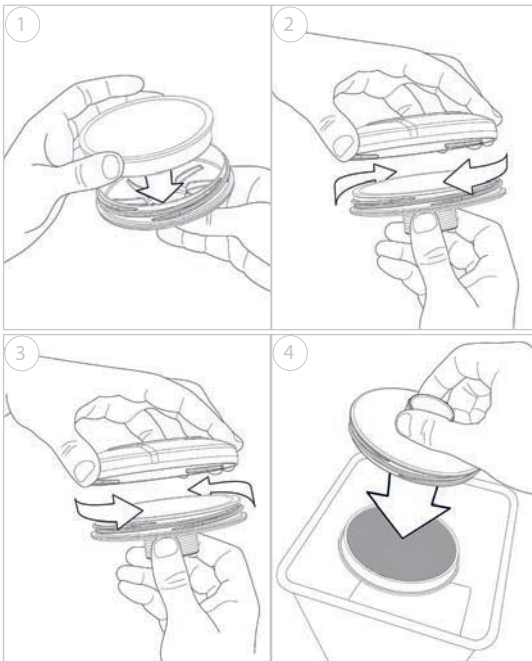


Certificates:

- DIN EN 143 & 12941/12942
- Filter class P3 PSL R
- Encapsulate filter

# e-breathe Particle filter

## Respiratory filters



Because resources are continuously becoming scarcer, more and more focus is placed on the sustainability of products. Especially when it comes to particulate filters, concepts, which indent to replace only the particulate fleece instead of the whole filter housing, were continually developed.

With the new ecoPAD e-breathe goes one step further.

The integrated P3 fleece is exactly the same fleece, which is used in standardized P3-filters. The tight fit of the fleece is achieved through a special rubber coating that was developed specifically for the ecoPAD. The top and bottom of the filter housing can be connected at once and enclose the particulate fleece firmly. This means that the user has the highest protection against particles and aerosols and the lowest breathing resistance simultaneously. When designing the filter it was especially taken care of keeping the thickness and weight of the filter as low as possible.

Considerable reduction of costs regarding disposal of used filters because the filter housing can be reused.







**[www.e-breathe.de](http://www.e-breathe.de)**

e-breathe  
Willicher Damm 99  
41066 Mönchengladbach  
Germany  
[info@e-breathe.de](mailto:info@e-breathe.de)